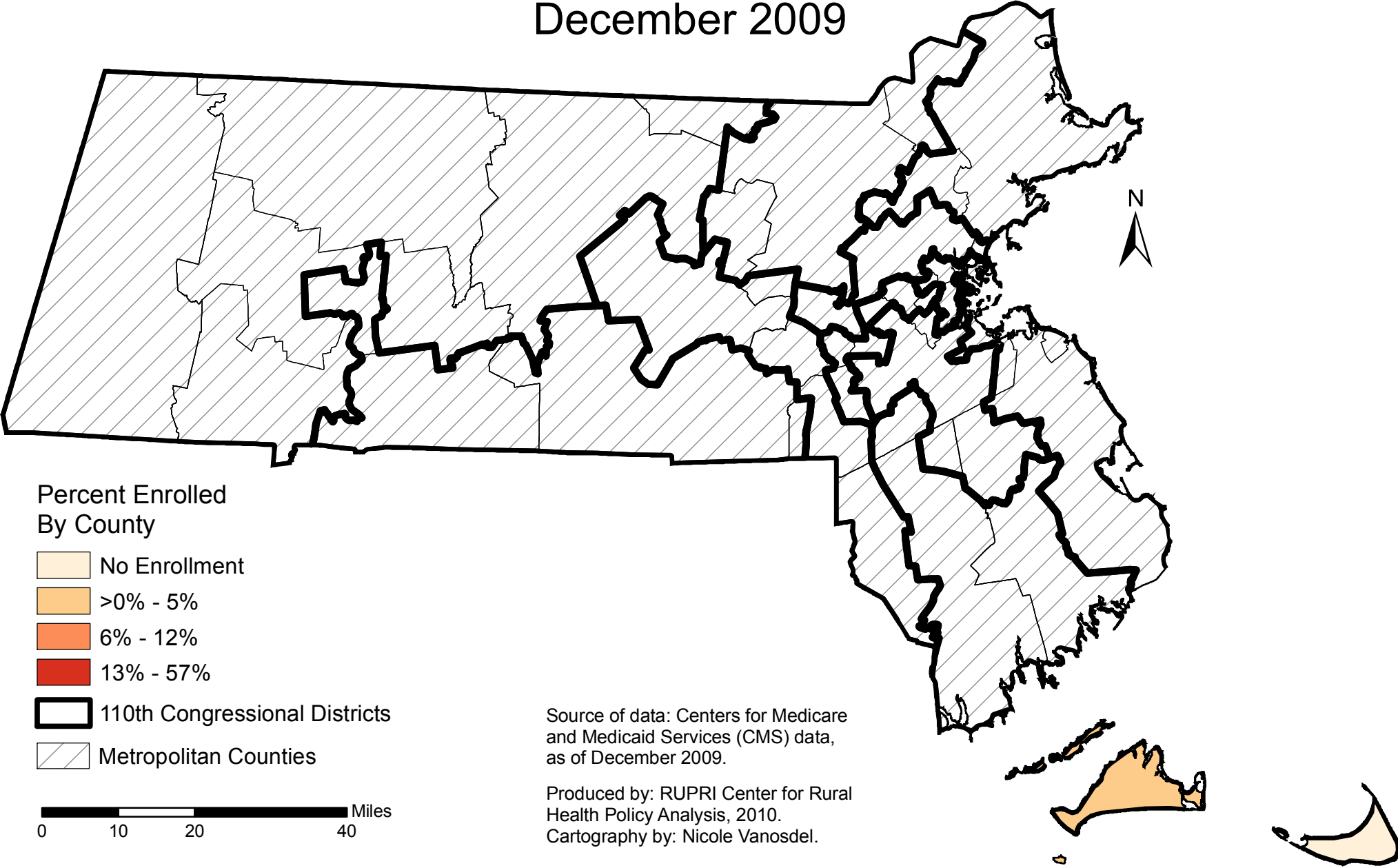


Percent of Eligible Nonmetropolitan Medicare Beneficiaries Enrolled in Medicare Advantage in Massachusetts, December 2009



Percent Enrolled By County

- No Enrollment
- >0% - 5%
- 6% - 12%
- 13% - 57%
- 110th Congressional Districts
- Metropolitan Counties

0 10 20 40 Miles

Source of data: Centers for Medicare and Medicaid Services (CMS) data, as of December 2009.

Produced by: RUPRI Center for Rural Health Policy Analysis, 2010.
Cartography by: Nicole Vanosdel.

Percent of Eligible Nonmetropolitan Medicare Beneficiaries Enrolled in Private Fee For Service in Massachusetts, December 2009

